



PAKISTAN  
MERCANTILE  
EXCHANGE

# SYSTEM SETTINGS AND CONFIGURATIONS GUIDE

## System Settings & Configurations

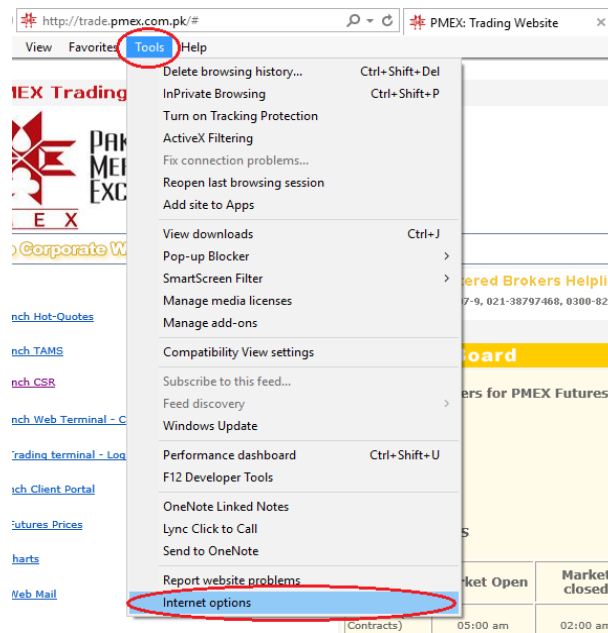
### 1. Hardware / Software Requirements

- A branded system (desktop / laptop) dedicated for PMEX NEXT Terminal
- CPU 2.0 GHz or above
- 2 GB RAM or above
- Latest licensed Windows with Latest OS Patches
- Internet Explorer 9.0 or above with latest patches
- Licensed Antivirus Software / Microsoft Security Essential
- High Speed / reliable internet connection of minimum 2mbps
- Port 80, 443 and 9090 must be open on firewall, if Hardware / Software firewall is installed
- Antivirus software must be updated daily for latest virus definitions
- Operating system must be updated at least once in a month for security patches

## 2. Mandatory Configuration of Internet Explorer Required for 'PMEX TRADING TERMINAL'

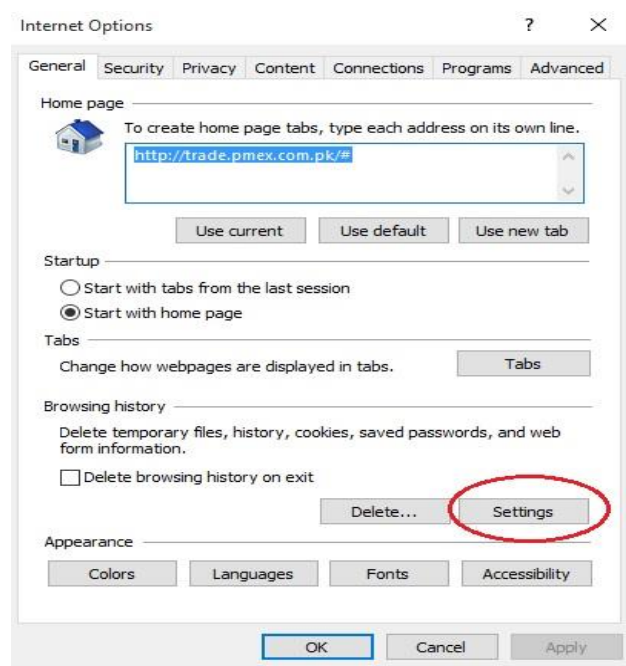
- Internet Explorer Temporary Internet Files and History settings must be set to options as 'Every time I visit the webpage'
- Explorer Setting Menu path: Tools>Internet Options

(Figure No.1)



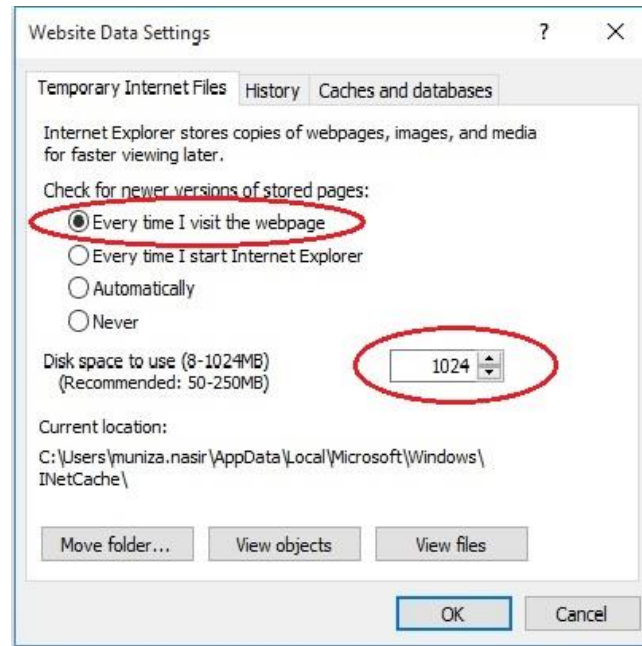
- General>Browsing History settings

(Figure No.2)



- Place a check on “Every time I visit the webpage” and put a figure 1024 in “Disk space to use”

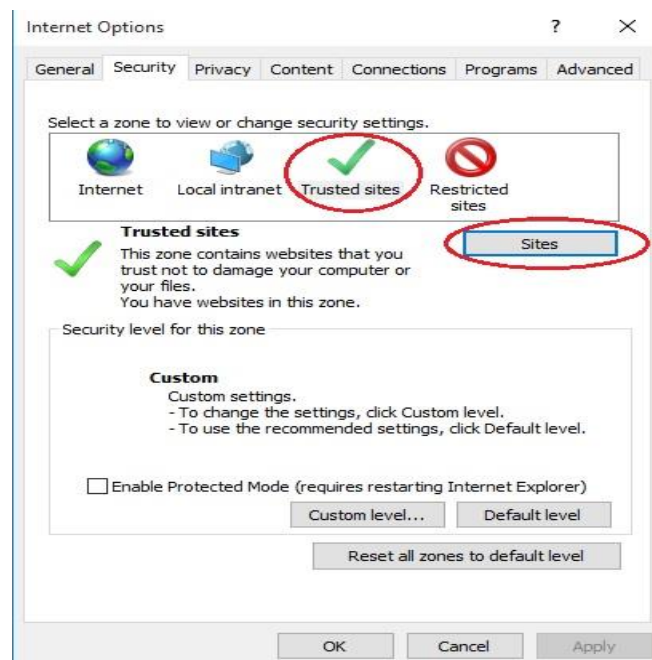
**(Figure No.3)**



### 3. PMEX Trusted Web Sites Configuration

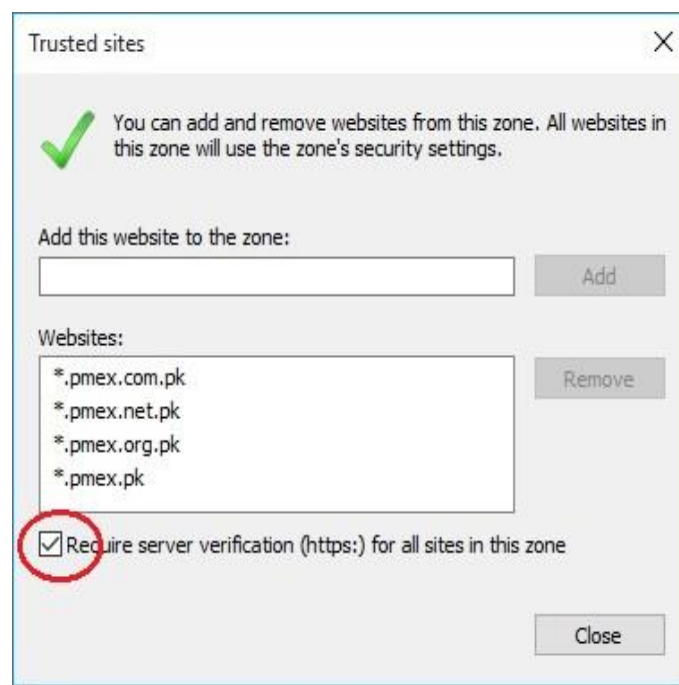
- Add websites to Trusted Sites security settings by following the menu path:
- Internet Options menu path: Tools>Internet Options>Security>Trusted sites> Sites

**(Figure No.1)**



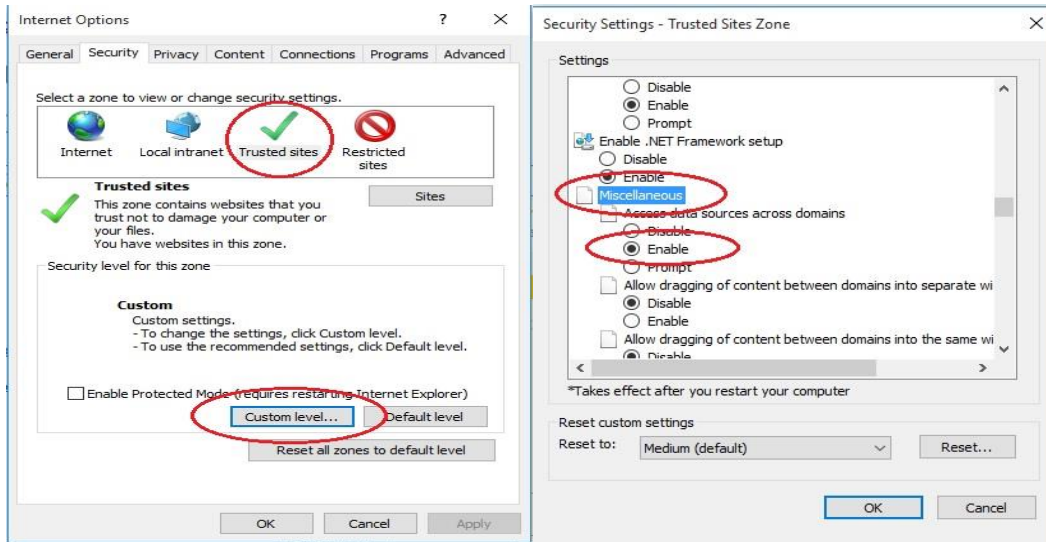
- Uncheck the “Require server verification (https:) for all sites in this zone” and add the following PMEX trading website in Add this website to the zone:
- \*.pmex.com.pk
- \*.pmex.net.pk
- \*.pmex.org.pk
- \*.pmex.pk

Figure No.2)



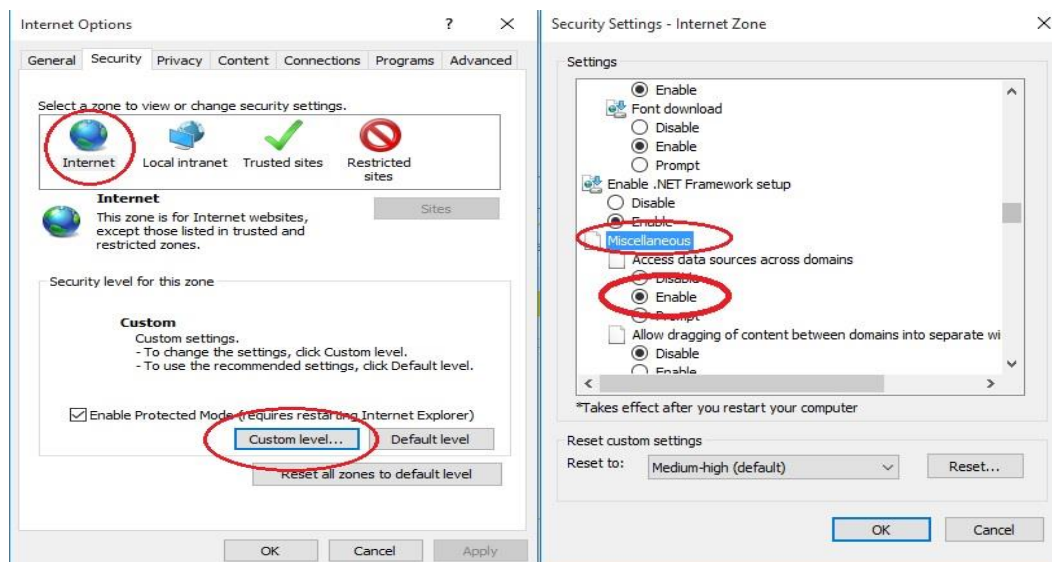
- After adding all PMEX trading websites in trusted zone check mark again on “Require server verification (https:) for all sites in this zone” option.
- Change Custom level security settings in Trusted sites option by following the menu path:
- IE Menu: Tools>Internet Options>Security>Trusted sites>Custom level>Miscellaneous>Access data sources across domains>Enable

(Figure No.3)



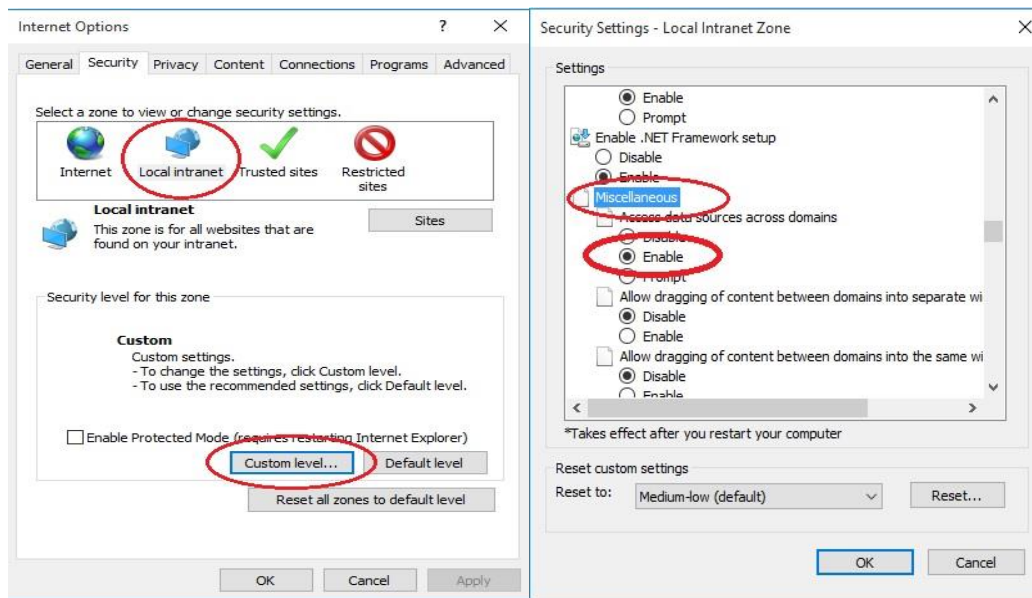
- Change Custom level security settings in Internet option by following the menu path:
- IE Menu: Tools>Internet Options>Security>Internet>Custom level>Miscellaneous>Access data sources across domains>Enable

(Figure No.4)



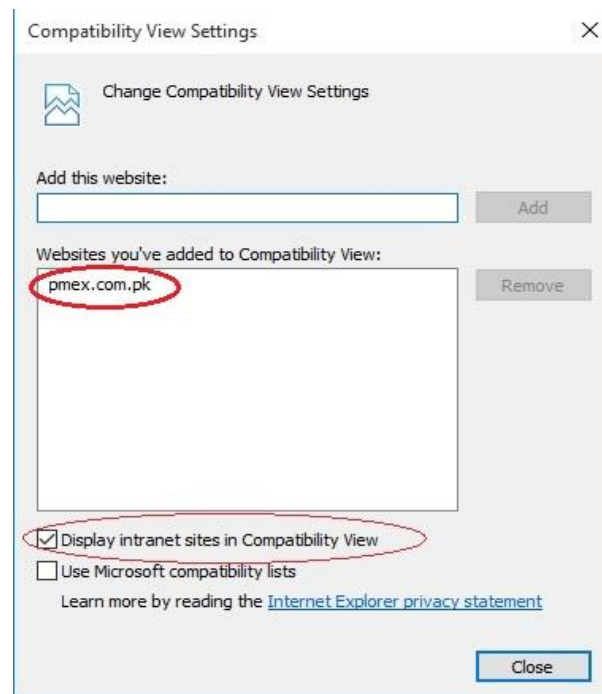
- Change Custom level security settings in Local Intranet Settings option by following the menu path:
- IE Menu: Tools>Internet Options>Security>Local Intranet Settings>Custom level>Miscellaneous>Access data sources across domains>Enable

(Figure No.5)



- Change compatibility view settings by following the menu path:
- IE Menu: Tools>Compatibility View Settings> Display Intranet sites in Compatibility View
- Add the PMEX website [www.pmex.com.pk](http://www.pmex.com.pk) in Compatibility view

(Figure No.6)



- After adding PMEX websites in Compatibility View check mark on “Display intranet sites in Compatibility View” option.